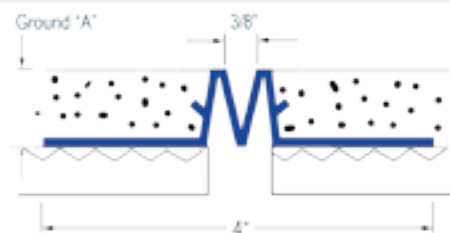
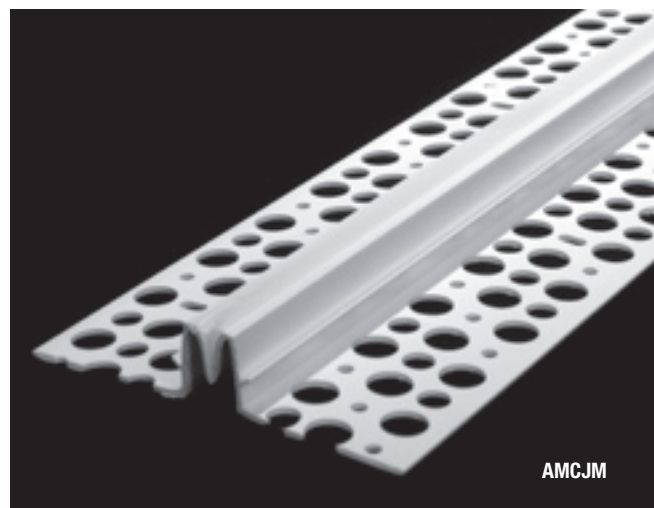


STUCCO EXPANSION JOINTS

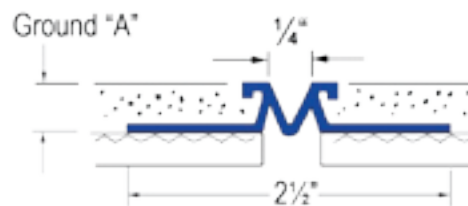
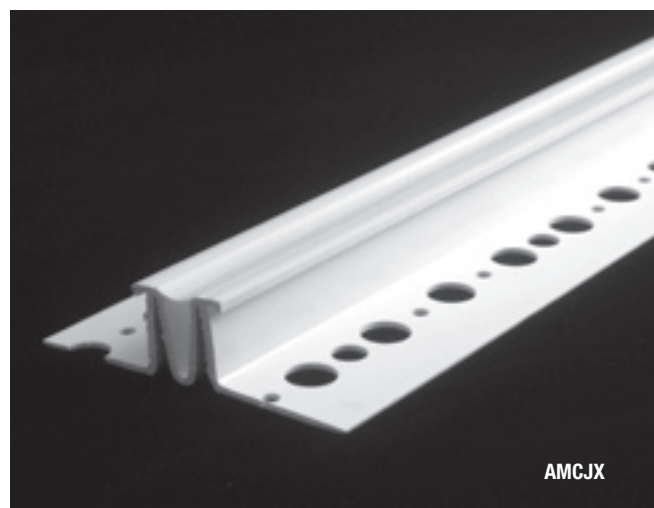
Vinyl M-Type Expansion Joint with Removable Tape is designed to relieve stress in the stucco membrane caused by typical stucco shrinkage and thermal movement. These joints can be ordered without the removable tape.

Product No.	Perforated Flange Dimensions	Ground "A"	Box Count
AMCJM-380	4" overall	3/8"	35
AMCJM-500	4" overall	1/2"	35
AMCJM-580	4" overall	5/8"	30
AMCJM-750	4" overall	3/4"	25
AMCJM-780	4" overall	7/8"	20



Vinyl Control Joint with Removable Tape is an improved version of the "M" type expansion joint. This Control Joint provides returns to better lock into the stucco. These joints can be ordered without the removable tape.

Product No.	Perforated Flange Dimensions	Ground "A"	Box Count
AMCJX-250	2 1/2" overall	1/4"	50
AMCJX-380	2 1/2" overall	3/8"	50
AMCJX-500	2 1/2" overall	1/2"	40
AMCJX-580	2 1/2" overall	5/8"	35
AMCJX-750	2 1/2" overall	3/4"	30
AMCJX-780	2 1/2" overall	7/8"	30



NOTES:

Removable tape has been provided to insure a clean joint after stucco application. All joints should be embedded in sealant and sealed after installation if necessary. If the joints are ordered without the removable tape, it will be the contractor's responsibility to keep the joint clean of wet stucco & any other debris.