

STUCCO WEEP SCREEDS

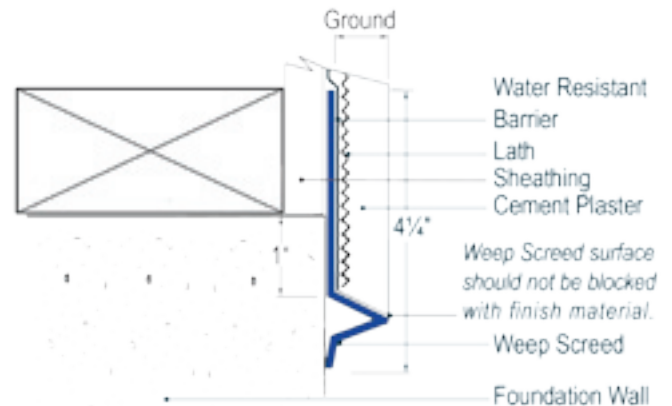
Foundation Weep Screed provides a straight and true screed surface at the base of stucco walls, while allowing excess moisture to escape the back of the stucco membrane. It is important for the water-resistant backing paper and metal lath to overlap the nailing flange of the weep screed in order to guide the water to the exterior. Check with local building codes for the proper clearance above grade. This bead is required by most building codes in the United States.

NOTE: This profile is manufactured with a 3½" nailing flange as required by code. Unpunched Foundation Weep Screed has only a slotted nail hole punchout in the flange. This weep screed is often used where stuccoed walls meet rooflines to provide drainage in this critical area. It can be used to provide drainage in areas other than at the foundation location.



AMFWS

Product No.	Dimensions	Ground	Box Count
AMFWS-425-380	4¼"	⅜"	30
AMFWS-425-500	4¼"	½"	30
AMFWS-425-580	4¼"	⅝"	30
AMFWS-425-750	4¼"	¾"	30
AMFWS-425-780	4¼"	⅞"	30

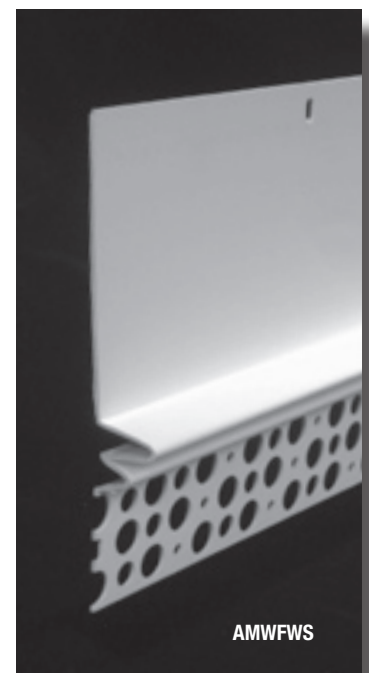
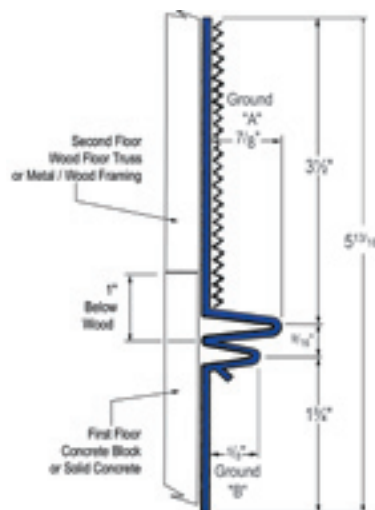


Mid-Wall Weep Screed (Patent Pending) performs as an unpunched weep screed allowing excess moisture to escape the back of a stucco membrane. This screed also performs as an expansion (control) joint with twin grounds. It is installed where a framed stucco surface meets a masonry (concrete block) stucco surface. This condition is common between floors on 2-story homes and at the base of a gable receiving stucco.

The unpunched flange above must be installed extending at least one inch below the framing/concrete joint. The weather barrier and lath should be installed over the solid upper flange to direct water to the foundation weep screed.

NOTE: This profile is manufactured with a 3½" nailing flange as required by code.

Product No.	Ground A	Ground B	Box Count
AMWFWS-780-500	⅞"	½"	15
AMWFWS-780-580	⅞"	⅝"	15



AMWFWS