

CEMENT PLASTER

AMICO  
SELF-FURRING  
EXPANDED METAL LATH

LATH FASTEN ABOVE E.J.

6" (150 mm) MIN. STRIP OF  
SAF OVER TOP OF E.J. TO  
PERMIT WRB TO WEEP AT E.J.

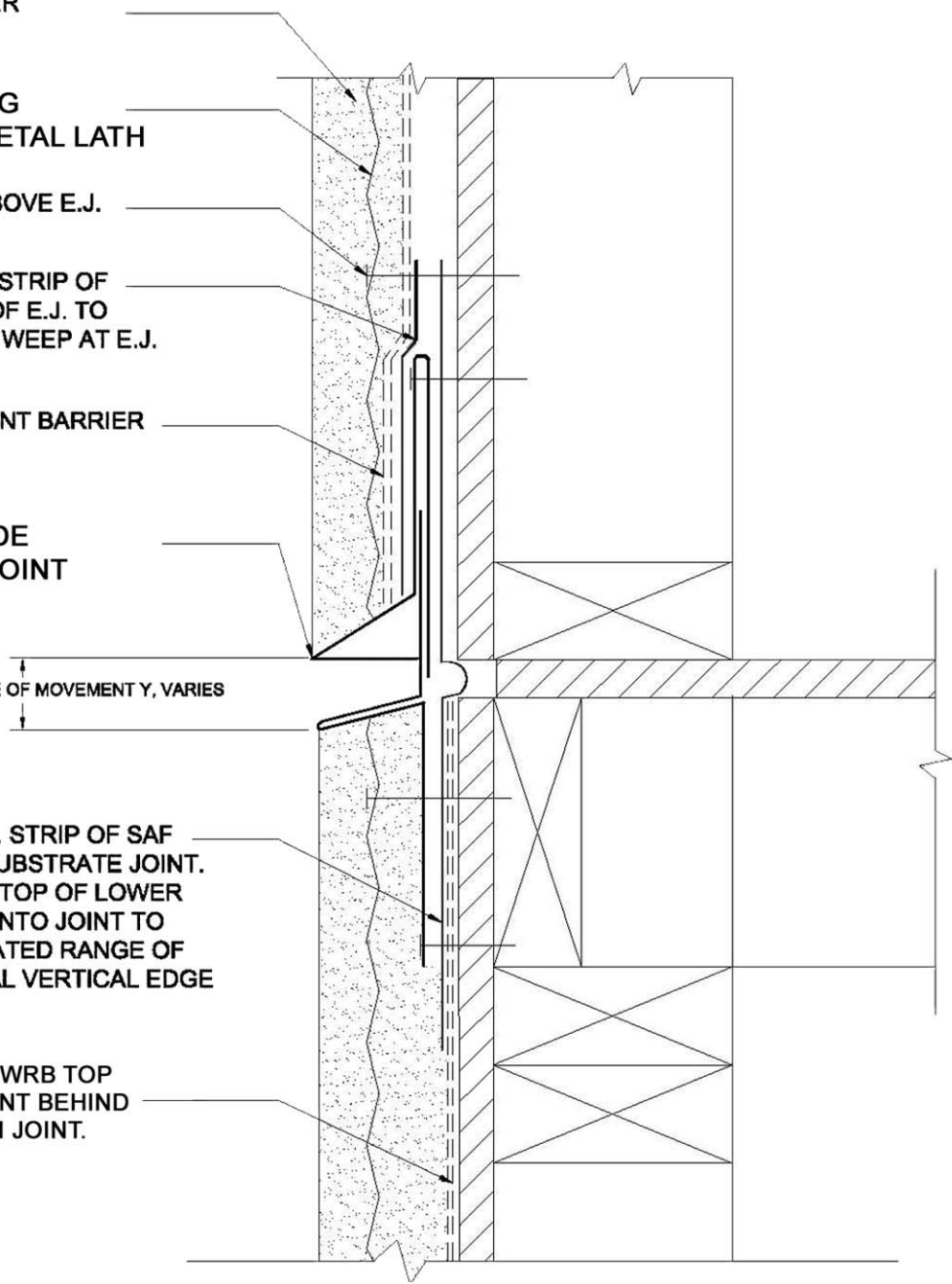
WATER RESISTANT BARRIER

AMICO M-SLIDE  
EXPANSION JOINT

SPECIFY GAP RANGE OF MOVEMENT Y, VARIES

12" (300 mm) MIN. STRIP OF SAF  
CENTERED AT SUBSTRATE JOINT.  
SAF LAPS OVER TOP OF LOWER  
WRB TUCK SAF INTO JOINT TO  
ALLOW ANTICIPATED RANGE OF  
MOVEMENT. SEAL VERTICAL EDGE  
OF SAF LAPS.

TOP OF LOWER WRB TOP  
SUBSTRATE JOINT BEHIND  
THE EXPANSION JOINT.



AMICO assumes not liability for failure resulting from the use of AMICO drawing or calculations, or failure resulting from the use of alternate materials, or improper applications or installations. This generic drawing is supplied solely to assist in the understanding of the product and should not be used in the design or construction without an independent evaluation by a certified and qualified Architect or Engineer of Record.

Drawing Number

1

M-SLIDE Horizontal EXPANSION JOINT  
Wall Section using Wood Framing

Revision

Description

Date

Revised By



ALABAMA METAL INDUSTRIES CORPORATON  
3245 Fayette Avenue ♦ Birmingham, AL 35208  
800/366-2642 ♦ www.amico-securityproducts.com

5/19/2011 fcm